



**MINISTÈRE  
CHARGÉ  
DE L'ENSEIGNEMENT  
SUPÉRIEUR  
ET DE LA RECHERCHE**

*Liberté  
Égalité  
Fraternité*



# Studying in All Territories



# Why a *Campus connecté*?

The *Campus connecté* is a project for students enrolled in a distance higher education program. It enables students who are far from a university campus to benefit from a nearby third-location learning center and additional support from a tutor for their studies.

# What is a *Campus connecté*?

A *Campus connecté* is a learning environment supported by a local authority. It operates thanks to the collaboration of several stakeholders, including the academic region, a nearby educational HEI (usually a university) and local partnerships.

The *Campus connecté* offers well-equipped, connected rooms, with furniture adapted to remote learning conditions. The space includes individual and group study areas, as well as a social area. Each student enrolled in a *Campus connecté* benefits from at least 12 hours of tutoring per week within the learning center.

# Who is it for?

This program is aimed at anyone geographically distant from a university campus, including students with special needs such as:

- High-level athletes
- People with disabilities
- Students resuming their studies
- Mothers with children
- And others who, without this program, would have to study alone at home or might not have access to higher education courses

# What is the role of a local higher education establishment?

A local university supports the *Campus connecté* by providing student life services, student support, information campaigns and tutor support.

## What kind of support is provided?

Every student at *Campus connecté* receives additional support alongside their remote education, including:

- Personalized tutoring to reinforce study methods, provide motivational support and help with administrative tasks.
- Participation in group workshops on topics such as stress management, public speaking, exam preparation, revision techniques, English, etc.
- Access to student life services, including sports, catering and academic resources.



# How does it work?



1

The candidate searches for an appropriate distance learning program

2

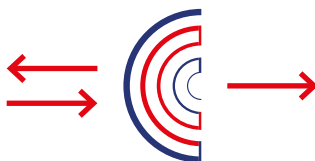
The candidate registers with the Higher Education institution offering the program



3

The Student applies for support from a *Campus connecté* near home

Local higher education institution



- Individual tutoring and activities
- Learning-friendly space
- Student socialization

# « Testimonials »

## **Raphaël, 28 years old**

### **Campus connecté Student**

*I'm a high-level athlete and I play tennis. I live in a small town of 7000 inhabitants in the south of France. I'm studying English in a distance learning program at a university in Paris. I'm enrolled at a Campus connecté a few kilometers from home, where I receive weekly individual tutoring. I also take part in group workshops offered by the campus, such as time management and note-taking. In addition, I have access to the resources of the university library, the student cafeteria and the health services of the neighboring university. It's amazing how I can reconcile my sporting career with my studies! I just hope I can manage my schedule with all my classes.*

## **Helena, 31 years old**

### **Campus connecté Tutor**

*I'm in charge of and tutor a Campus connecté in a rural town in southwest France. I support 20 students enrolled in different distance learning programs in a variety of fields (mathematics, computer science, educational sciences, accounting, law, political science, literature, etc.). The students at the Campus connecté are preparing for diplomas such as the DAEU (A level), BTS (2 years after the A level), bachelor's and master's degrees.*

*My role is to complement their remote education with methodological, motivational and administrative tutoring. I also organize group workshops to help students develop transferable skills. My responsibilities are many and varied. This new profession is incredibly rewarding and requires a wide range of skills. I play a key role in the students success.*

## **Philippe, 54 years old**

### **University Partner Representative**

*I'm a teacher-researcher and vice-president in charge of partnerships and regional development at a university in northwest France. Our university has 25,000 students and is located around 100 kilometers from the Campus connecté with which we are partnered. The Campus connecté, located in a town of 5,000 inhabitants, hosts 15 students. We provide workshops and tutoring to students, as well as access to student life services such as university library resources, health services, cultural and sporting activities, and the student cafeteria.*

*Being a partner of Campus connecté enables us to support it and offer evolving student life initiatives. This partnership has created a dynamic collaboration between various stakeholders, all driven by a common goal: to contribute to the success of our region's students.*

# Resources for Students with Special Needs

## Who are students with special needs?

- Student artists
- Students with disabilities
- High-level athletes
- Student caregivers
- Students from overseas territories
- Students with family responsibilities
- Returning students



Learn more → [enseignementsup-recherche.gouv.fr/fr/guide-de-l-etudiante-ou-de-l-etudiant-artiste-besoins-particuliers-91283](https://enseignementsup-recherche.gouv.fr/fr/guide-de-l-etudiante-ou-de-l-etudiant-artiste-besoins-particuliers-91283)

6

Learn more → [enseignementsup-recherche.gouv.fr/fr/accompagnement-des-etudiants-aidants-par-les-etablissements-d-enseignement-superieur-95295](https://enseignementsup-recherche.gouv.fr/fr/accompagnement-des-etudiants-aidants-par-les-etablissements-d-enseignement-superieur-95295)



## Testimony of a student caregiver

**Samuel, 22 years old,  
Computer Science Student**

*My father has been paraplegic since a car accident five years ago. In addition to my computer studies, I look after him every day: I help him get around, assist him with his rehabilitation exercises and make sure he has everything he needs. It's a constant challenge, but it has taught me patience and how to find creative solutions to unexpected problems. Thanks to remote learning and the support of a nearby Campus connecté, I've been able to continue my studies while taking care of my responsibilities at home.*



Learn more → [services.dgesip.fr/fichiers/APACHES-plaquette-handi.pdf](https://services.dgesip.fr/fichiers/APACHES-plaquette-handi.pdf)

MON PARCOURS  
HANDICAP  
.gouv.fr

Learn more → [monparcourshandicap.gouv.fr](https://monparcourshandicap.gouv.fr)



**MINISTÈRE  
CHARGÉ  
DE L'ENSEIGNEMENT  
SUPÉRIEUR  
ET DE LA RECHERCHE**

*Liberté  
Égalité  
Fraternité*

## Useful Links

**Any question about the program *Campus connecté*?**

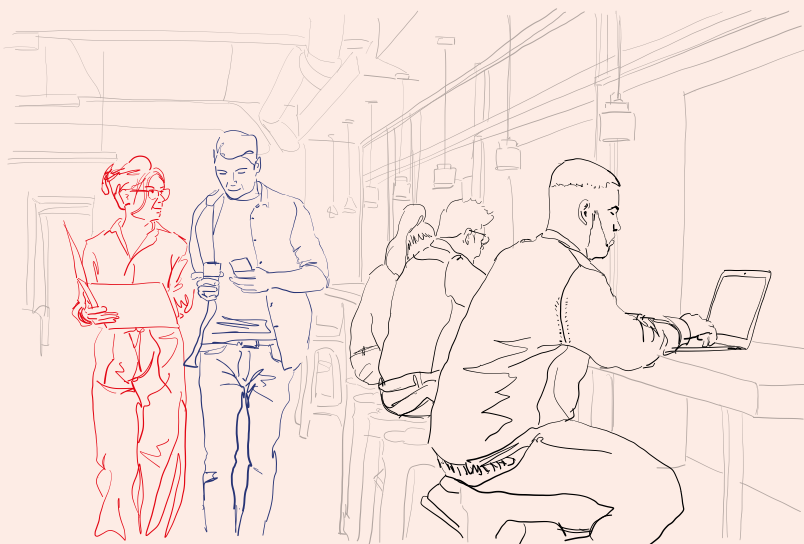
→ [campus-connecte@enseignementsup.gouv.fr](mailto:campus-connecte@enseignementsup.gouv.fr)

**Find a *Campus connecté* near you**

→ [services.dgesip.fr/CampusConnectes](https://services.dgesip.fr/CampusConnectes)

**Informations about the program *Campus connecté***

→ [etudiant.gouv.fr/fr/les-campus-connectes-1075](https://etudiant.gouv.fr/fr/les-campus-connectes-1075)



Campus connecté is a program managed by the Directorate General for Higher Education and Professional Integration (Dgesip)

Department of Success and Equal Opportunities

1 rue Descartes

75005 Paris cedex

Dgesip — Mars 2025