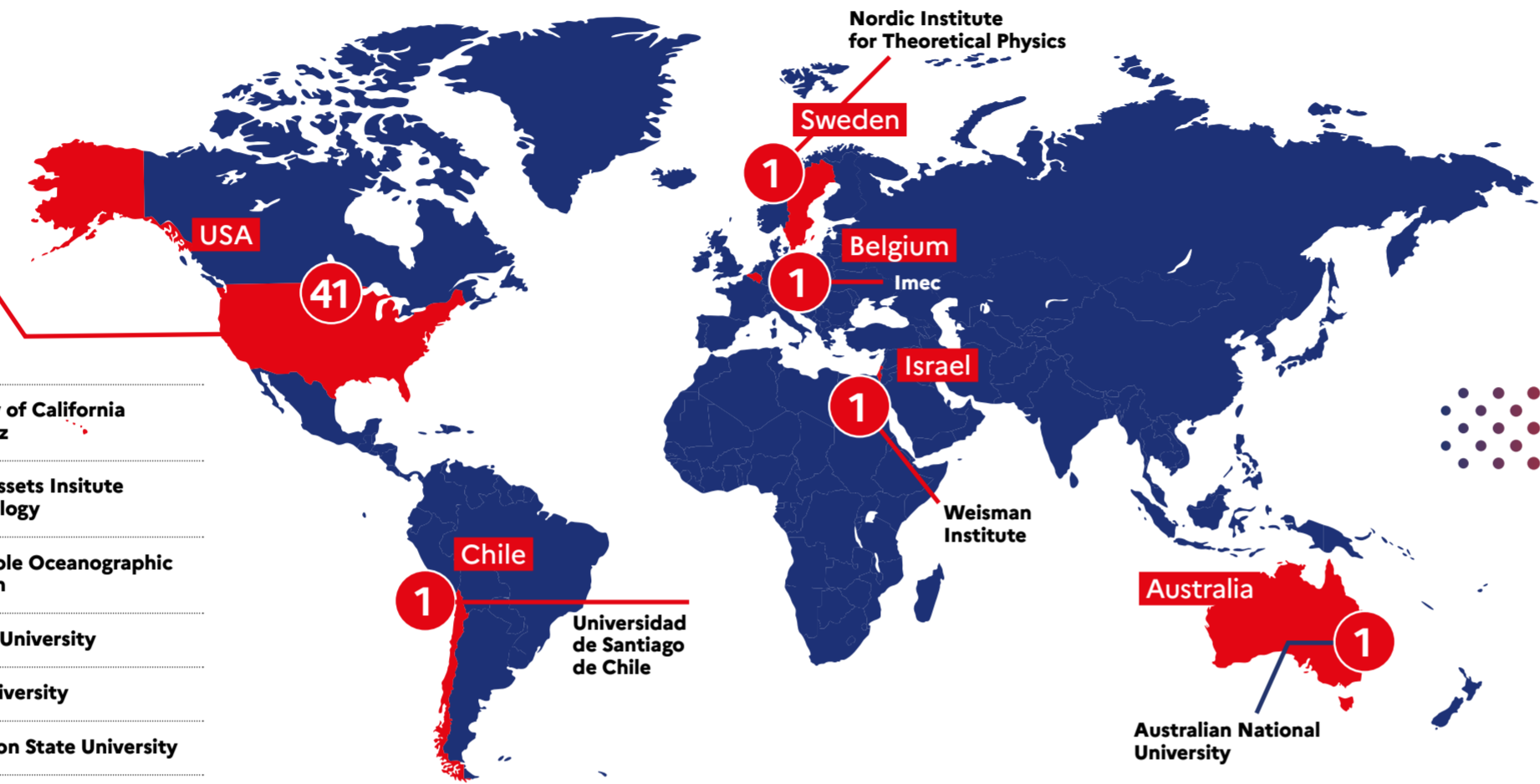
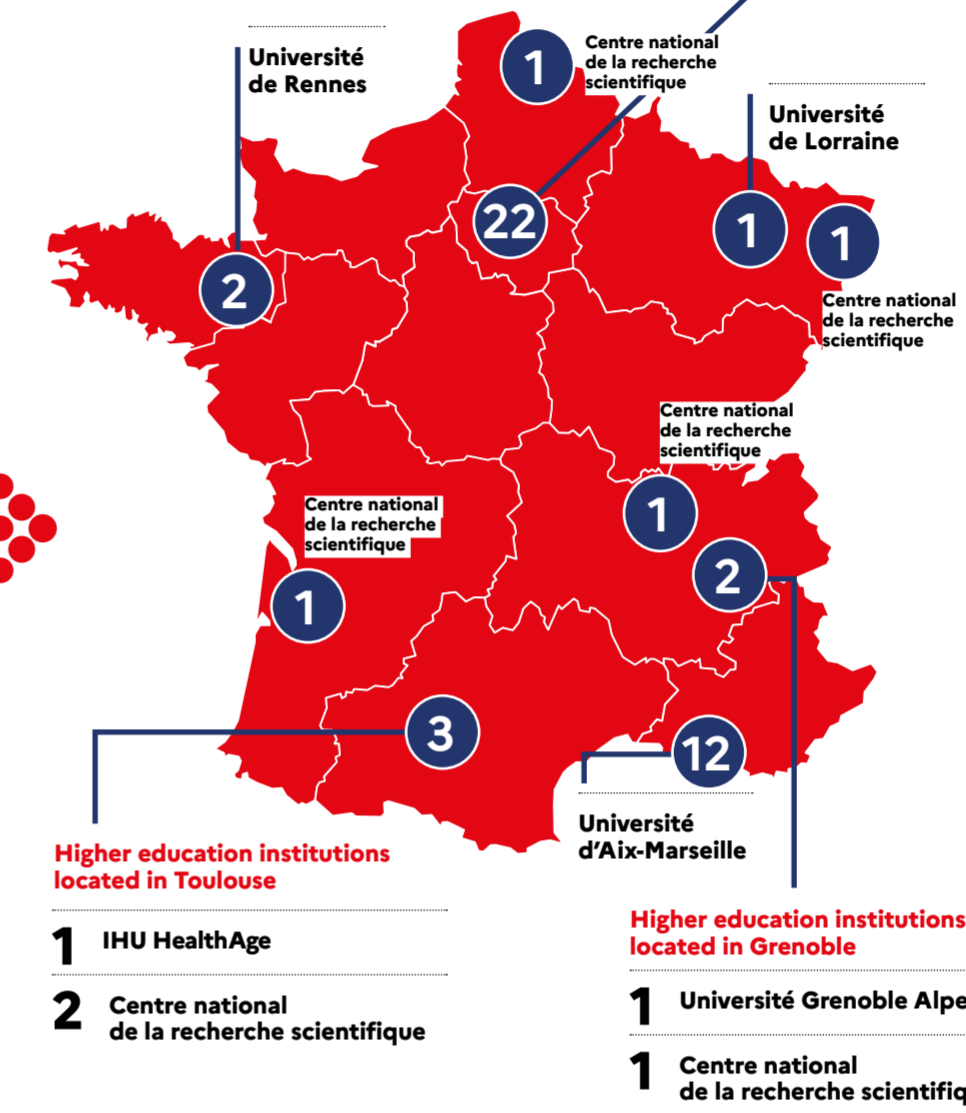


Distribution of laureates by home institution

- Higher education institutions**
- 2 University of Washington
 - 8 Columbia University
 - 1 Harvard
 - 1 Johns Hopkins University
 - 1 University of California at Berkeley
 - 1 Lawrence Berkeley National Lab
 - 1 Memorial Sloan-Kettering Cancer Center
 - 1 Nasa Headquarters
 - 2 Nasa – Goddard Space Flight Center
 - 1 National Institute of Health
 - 1 Northern Arizona University
 - 1 Princeton University
 - 1 The George Washington University
 - 1 The University of Illinois at Urbana Champaign
 - 1 University of Arizona
 - 4 University of California Los Angeles
 - 1 University of California San Francisco
 - 1 University of California Santa Cruz
 - 1 Massachusetts Institute of Technology
 - 1 Woods Hole Oceanographic Institution
 - 2 Stanford University
 - 1 Drexel University
 - 1 Washington State University
 - 1 Clemson University
 - 1 Montana State University
 - 1 University of Pennsylvania
 - 1 Icahn School of Medicine at Mount Sinai
 - 1 California Institute of Technology

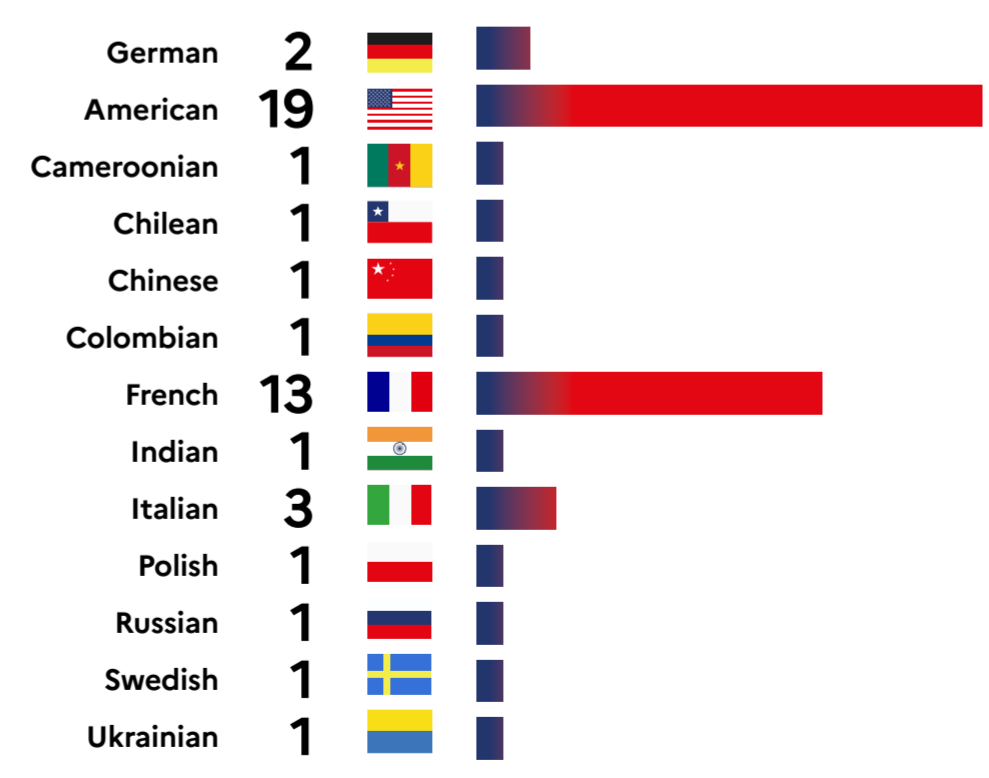


Number of laureates by host institution

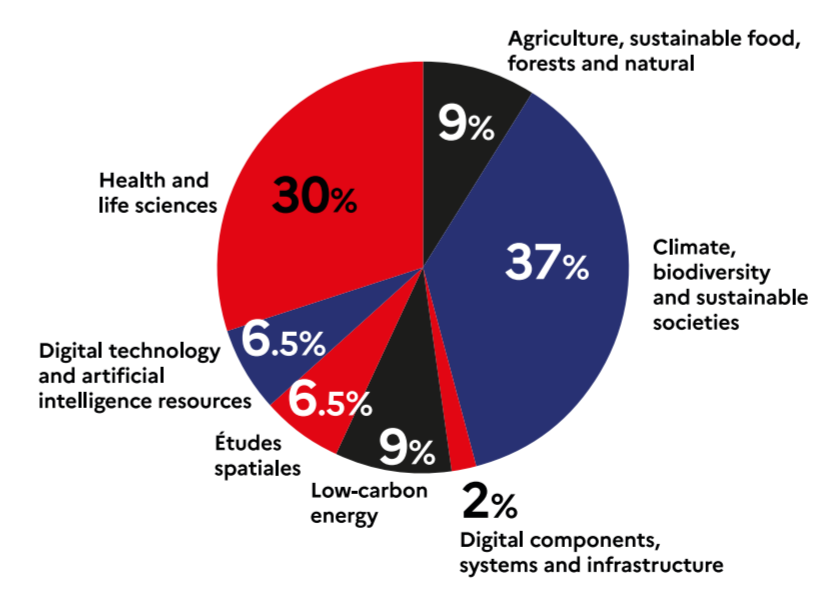


- Higher education institutions located in the Ile-de-France region**
- 8 Centre national de la recherche scientifique
 - 3 Institut Pasteur
 - 1 Institut Gustave Roussy
 - 1 Institut des hautes études scientifiques
 - 1 Institut national de la santé et de la recherche médicale
 - 1 Institut national des langues et civilisations orientales
 - 1 Université de Versailles Saint-Quentin-en-Yvelines
 - 1 Centrale Supélec
 - 1 Université Paris Saclay
 - 1 ENS PSL
 - 1 ENS Paris Saclay
 - 1 INRAE
 - 1 Institut de Physique du Globe de Paris

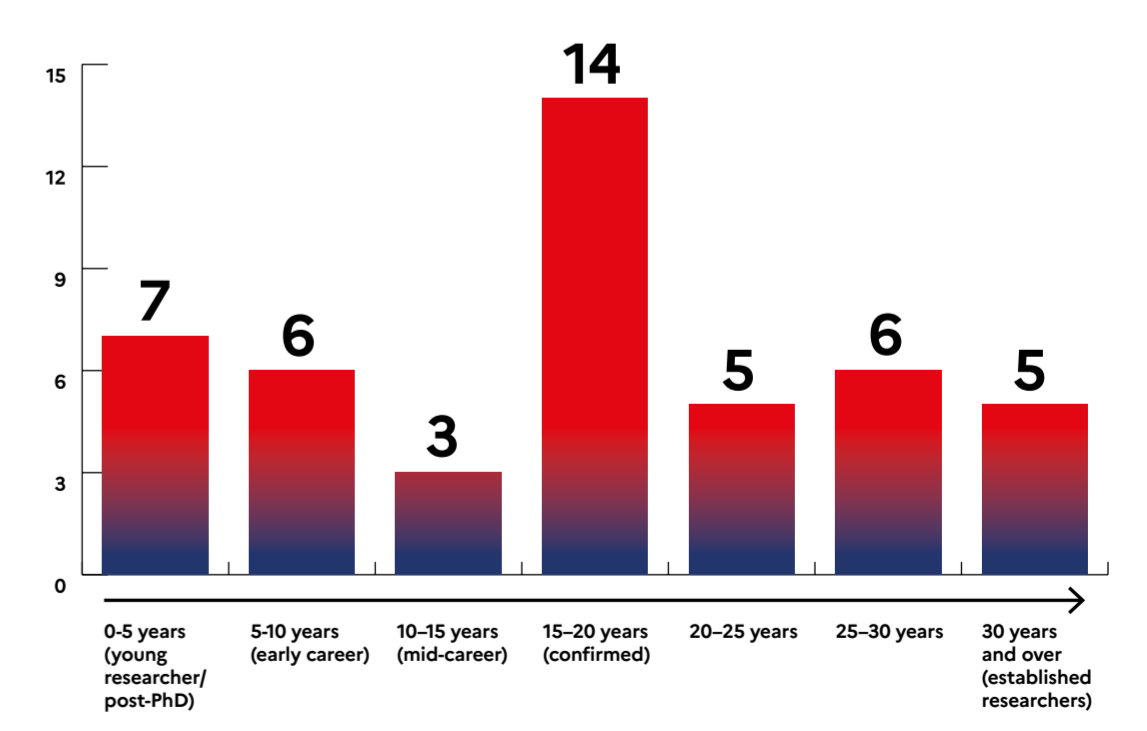
Over a dozen nationalities



Distribution of laureates by theme: strong appeal of climate



Candidates with confirmed experience



Choose France for science

Profile of the first 46 recipients
as of January 19, 2026

Over 2,000 applications created

119 applications submitted

46 laureates selected by the jury